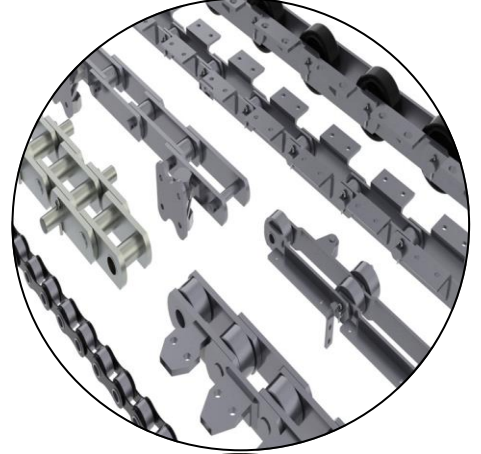
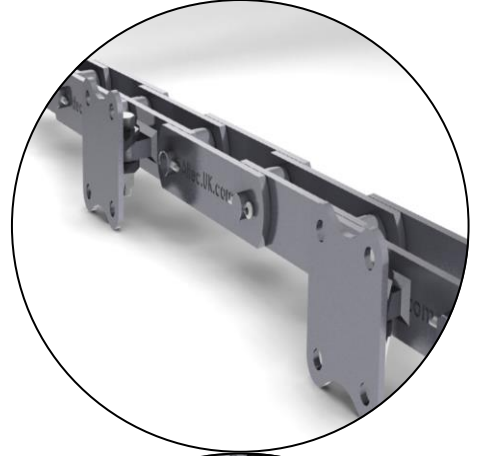
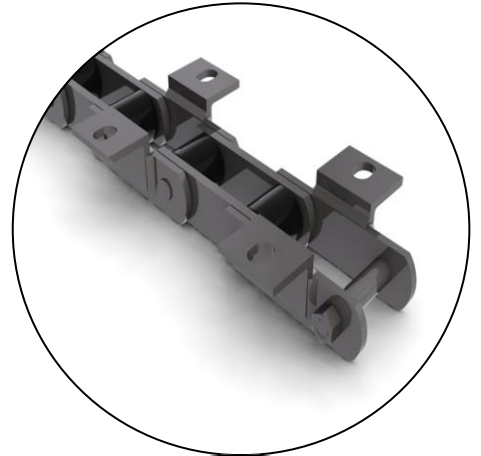


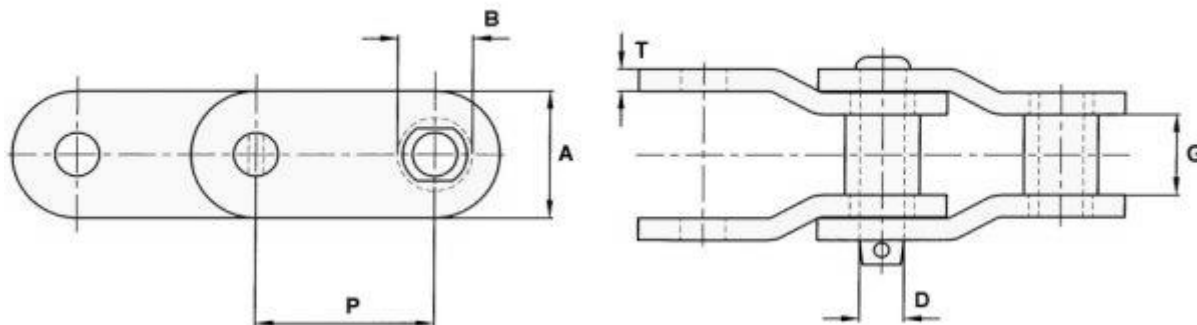
# Elevator and Drag chains



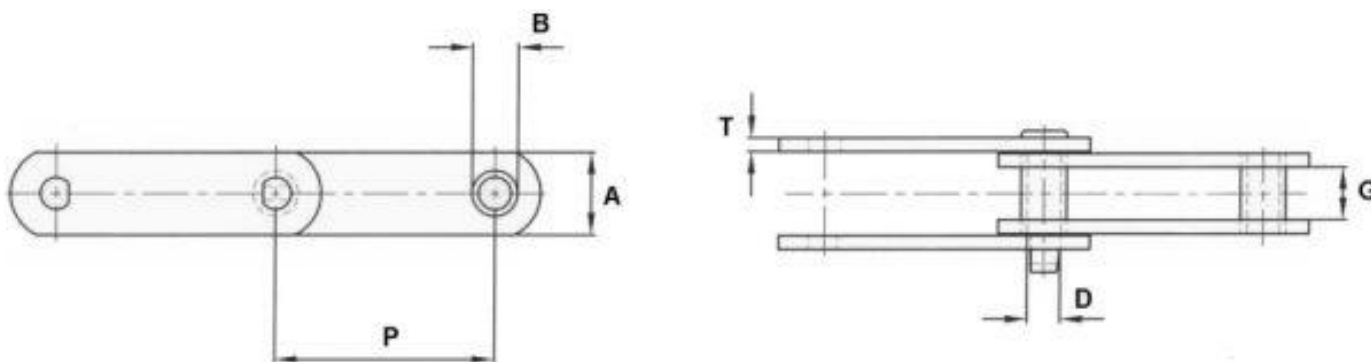
Altec UK Ltd  
The Mohawk Building,  
Gorse Street  
Blackburn  
BB1 3EU  
T. 0800 756 9669 or 01254 311155  
F. 0800 756 9719

# Elevator and Drag Chains

## Cranked Link Palm Oil Chain



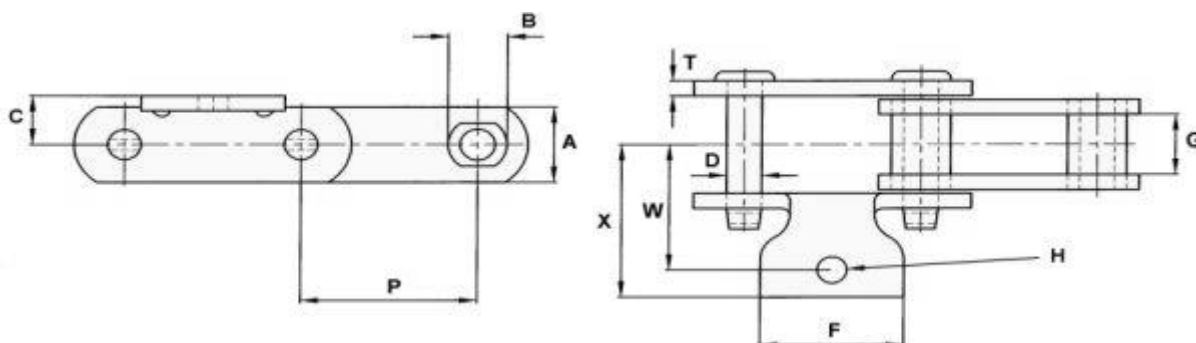
CHAIN NO.	PITCH P	ALLOW. LOAD	U.T.S.	PIN DIA. D	SIDEBAR DEPTH A	MAX. GEARING G	BUSH DIA. B	SIDEBAR THICKNESS T
ER4103	3.075	4,920	44,000	0.75	1.75	1.25	1.25	0.31
SS100C	3.910	4,150	27,500	0.56	1.75	1.51	1.25	0.31
B5094	4.000	5,100	40,000	0.62	1.75	1.58	1.44	0.31
B5117	4.000	7,800	74,000	0.75	1.56	2.00	1.38	0.38



CHAIN NO.	PITCH P	ALLOW. LOAD	U.T.S.	PIN DIA. D	SIDEBAR DEPTH A	MAX. GEARING G	BUSH DIA. B	SIDEBAR THICKNESS T
SS104	4.050	6,200	25,000	0.62	1.50	2.25	1.19	0.31

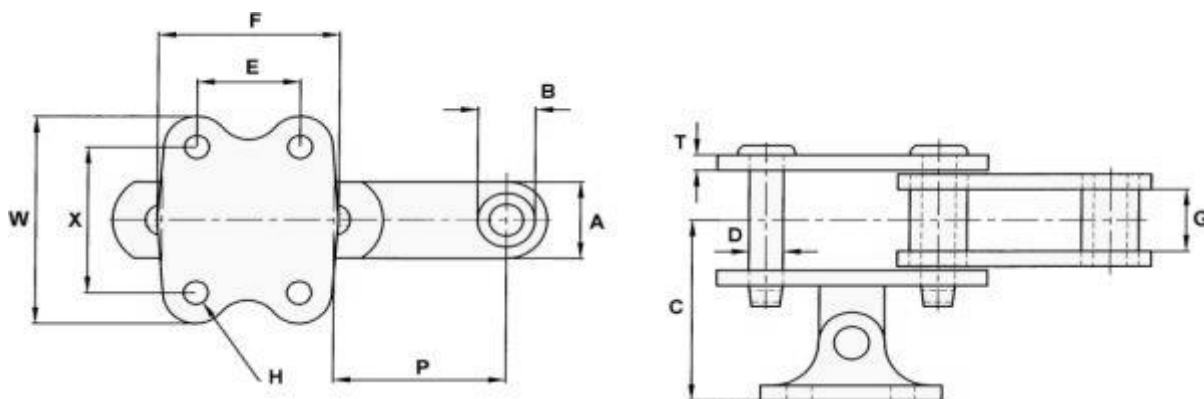
# Elevator and Drag Chains

## K1 attachment



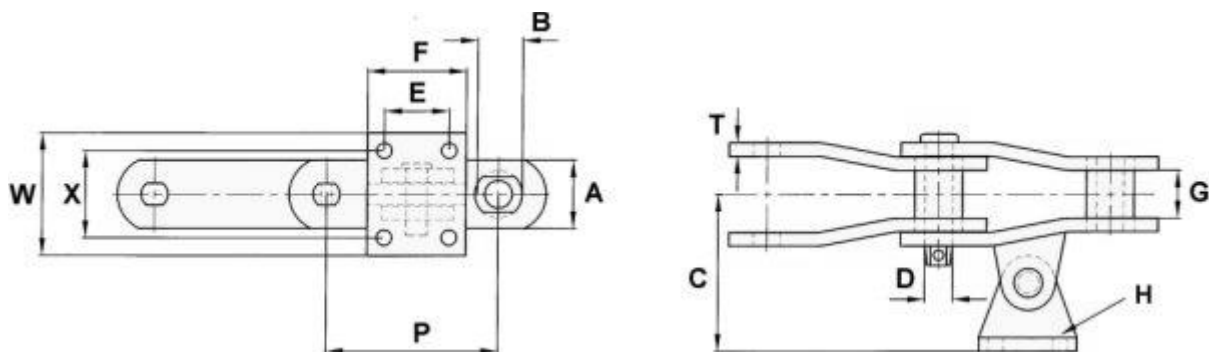
CHAIN NO.	PITCH P	ALLOW. LOAD	U.T.S.	PIN DIA. D	SIDEBAR DEPTH A	MAX GEARING G	BARREL DIA. B	C	F	BOLT DIA. H	T	W	X
SS188	2.609	2,800	25,000	0.50	1.25	1.06	0.87	0.81	2.13	0.38	0.25	1.87	1.56

## GS20 attachments



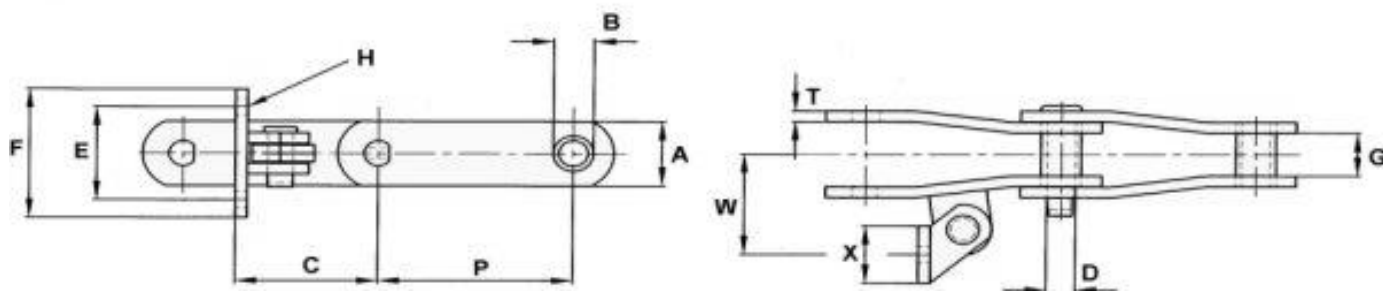
CHAIN NO.	PITCH P	ALLOW. LOAD	U.T.S.	PIN DIA. D	SIDEBAR DEPTH A	MAX GEARING G	BARREL DIA. B	C	E	F	BOLT DIA. H	T	W	X
SS188	2.609	2,800	25,000	0.50	1.25	1.06	0.88	2.94	1.56	2.75	0.31	0.25	3.19	2.19
SS102B	4.000	6,300	40,000	0.62	1.50	2.13	1.00	3.89	1.69	3.13	0.31	0.38	3.50	2.44
SS110	6.000	6,300	40,000	0.62	1.50	2.13	1.25	4.25	2.50	4.00	0.38	0.38	3.50	2.25
B5239	6.000	8,860	75,000	0.75	2.00	2.62	1.44	4.69	2.50	3.75	0.50	0.38	4.25	3.00

# Elevator and Drag Chains



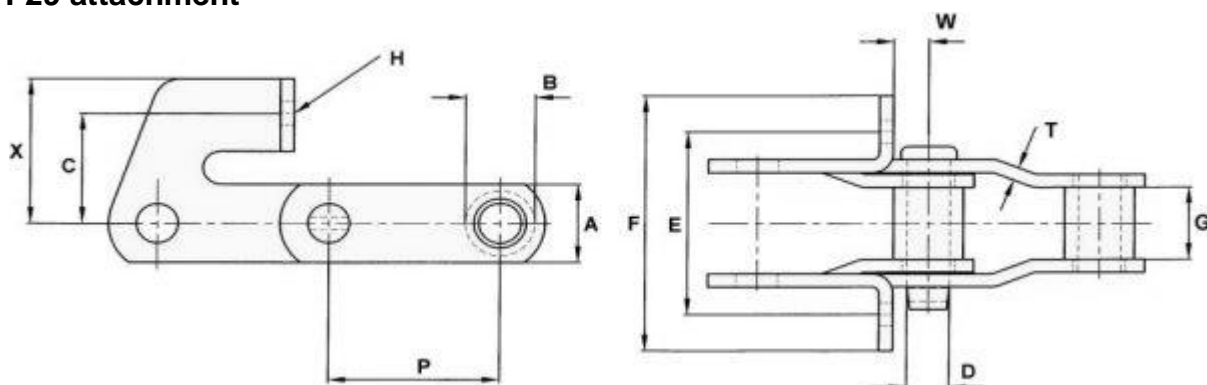
CHAIN NO.	PITCH P	ALLOW. LOAD	U.T.S.	PIN DIA. D	SIDEBAR DEPTH A	MAX. GEARING G	BARREL DIA. B	C	E	F	H	T	W	X
B5314	6.300	9,625	100,000	1.00	2.50	1.75	1.75	5.75	2.38	3.62	0.50	0.50	4.50	3.19

## AS2 attachment



CHAIN NO.	PITCH P	ALLOW. LOAD	U.T.S.	PIN DIA. D	SIDEBAR DEPTH A	MAX. GEARING G	BUSH DIA. B	C	E	F	BOLT DIA. H	T	W	X
B5111	4.760	8,860	75,000	0.75	2.00	2.62	1.44	4.76	3.50	5.00	0.50	0.38	4.00	2.00

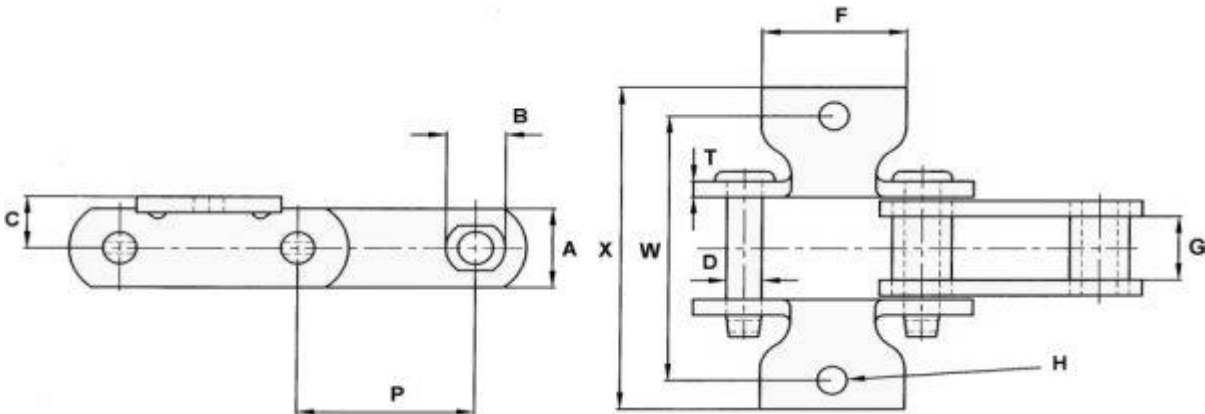
## F29 attachment



CHAIN NO.	PITCH P	ALLOW. LOAD	U.T.S.	PIN DIA. D	SIDEBAR DEPTH A	MAX. GEARING G	BUSH DIA. B	C	E	F	BOLT DIA. H	T	W	X
E2103	3.075	4,900	34,000	0.75	1.50	1.38	1.25	2.09	3.50	4.88	0.38	0.25	0.63	2.75

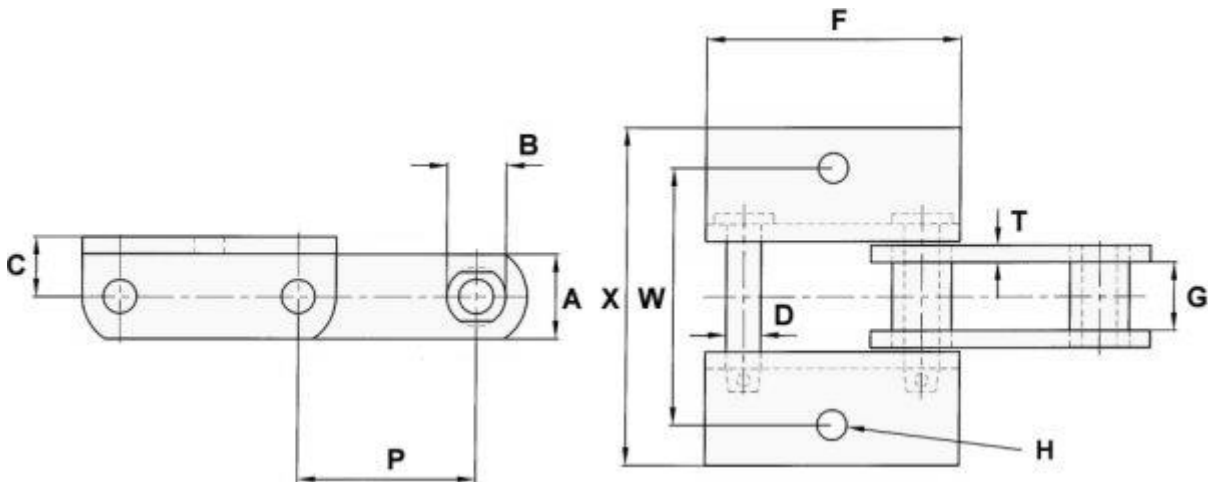
# Elevator and Drag Chains

## K1 attachments



CHAIN NO.	PITCH P	ALLOW. LOAD	U.T.S.	PIN DIA. D	SIDEBAR DEPTH A	MAX GEARING G	BARREL DIA. B			BOLT DIA. H			
SS188	2.609	2,800	25,000	0.50	1.25	1.06	0.87	0.81	2.13	0.38	0.25	3.75	2.61

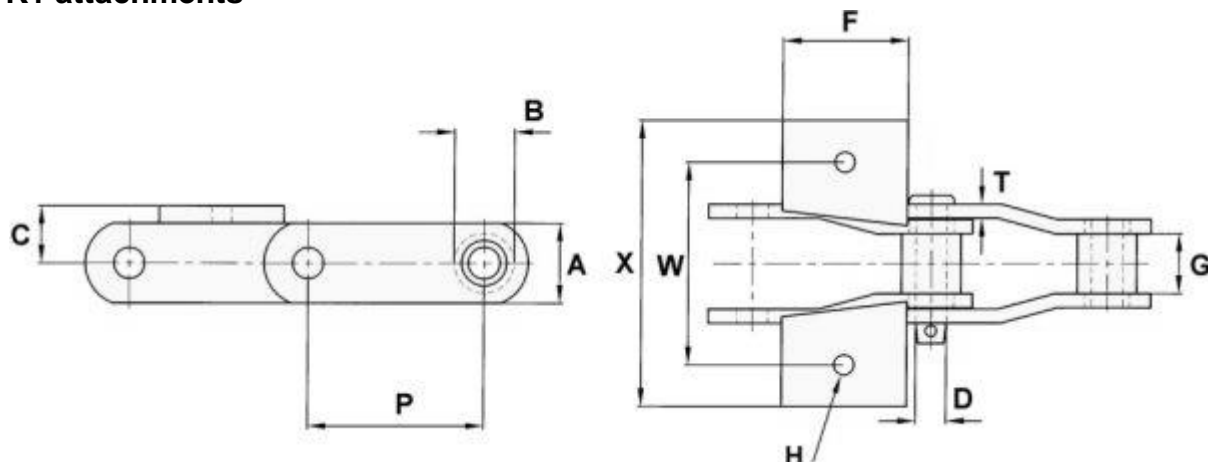
## K1 Attachments



CHAIN NO.	PITCH P	ALLOW. LOAD	U.T.S.	PIN DIA. D	SIDEBAR DEPTH A	MAX GEARING G	BARREL DIA. B			BOLT DIA. H			
SS578Y	2.630	2,780	27,500	0.50	1.25	1.06	0.87	0.87	3.75	0.38	0.25	3.81	5.00

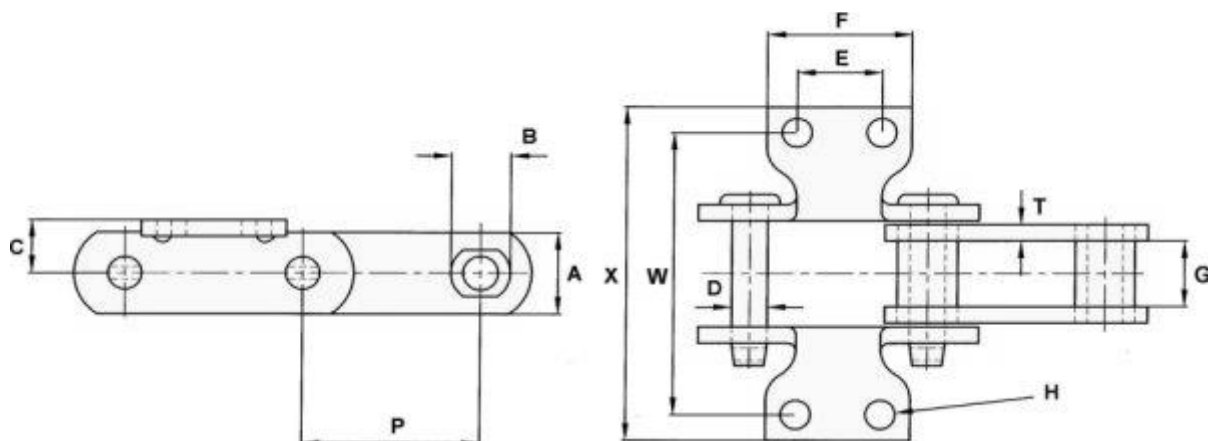
# Elevator and Drag Chains

## K1 attachments



CHAIN NO.	PITCH P	ALLOW. LOAD	U.T.S.	PIN DIA. D	SIDEBAR DEPTH A	MAX GEARING G	BARREL DIA. B	C	F	BOLT DIA. H	T	W	X
SS100B	3.937	4,100	35,000	0.56	1.75	1.44	1.18	1.00	2.13	0.38	0.31	4.00	5.56

## K2 attachments

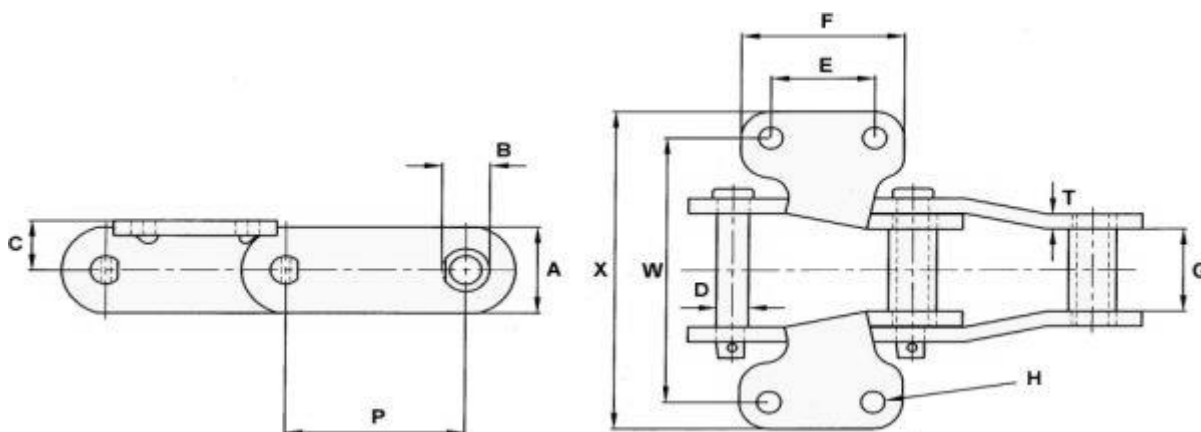


CHAIN NO.	PITCH P	ALLOW. LOAD	U.T.S.	PIN DIA. D	SIDEBAR DEPTH A	MAX GEARING G	BARREL DIA. B	C	E	F	BOLT DIA. H	T	W	X
SS188	2.609	2,800	25,000	0.50	1.25	1.06	0.88	0.81	1.25	2.13	0.38	0.25	4.19	5.13
SS131	3.075	4,500	40,000	0.62	1.50	1.31	1.25	1.00	1.50	2.63	0.50	0.38	4.13	5.13
SS102B	4.000	6,300	40,000	0.62	1.50	2.13	1.00	1.00	1.75	2.69	0.38	0.38	5.31	6.66
SS111	4.760	8,850	75,000	0.75	2.00	2.63	1.44	1.50	2.31	3.63	0.38	0.38	6.25	8.06
SS110	6.000	6,300	40,000	0.62	1.50	2.13	1.25	1.00	1.75	2.88	0.38	0.38	5.31	6.66
B5239	6.000	8,860	75,000	0.75	2.00	2.62	1.44	1.50	2.31	4.50	0.50	0.38	6.25	8.38

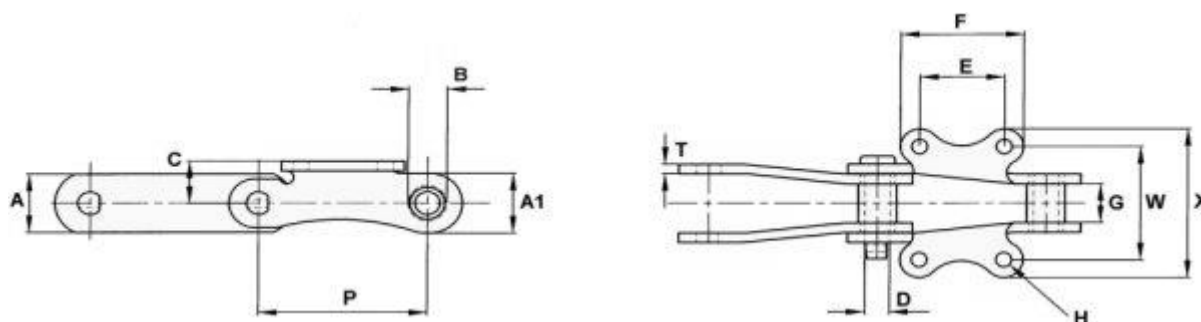
SS102B can be supplied with 1.1/2" diameter rollers if required

# Elevator and Drag Chains

## Cranked side bar



CHAIN NO.	PITCH P	ALLOW. LOAD	U.T.S.	PIN DIA. D	SIDEBAR DEPTH A	MAX GEARING G	BARREL DIA. B				BOLT DIA. H				
7140X	6.060	15,800	70,000	1.06	3.25	3.13	1.63	1.88	3.50	5.50	0.62	0.56	10.00	12.00	

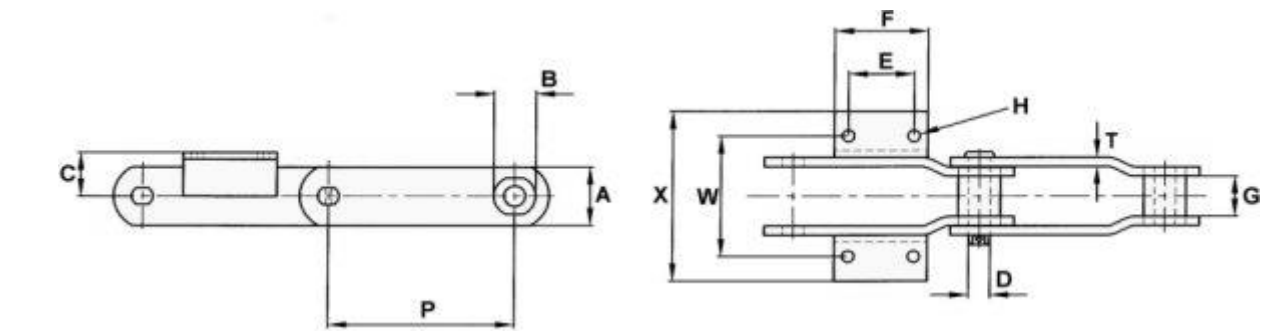


CHAIN NO.	PITCH P	ALLOW. LOAD	U.T.S.	PIN DIA. D	PLAIN SIDEBAR DEPTH A	ATTACH. SIDEBAR DEPTH A1	MAX. GEARING G	BUSH DIA. B				BOLT DIA. H				
B5252	6.000	7,500	100,000	0.87	2.25	2.30	1.50	1.38	1.63	3.00	4.38	0.50	0.38	4.38	5.75	



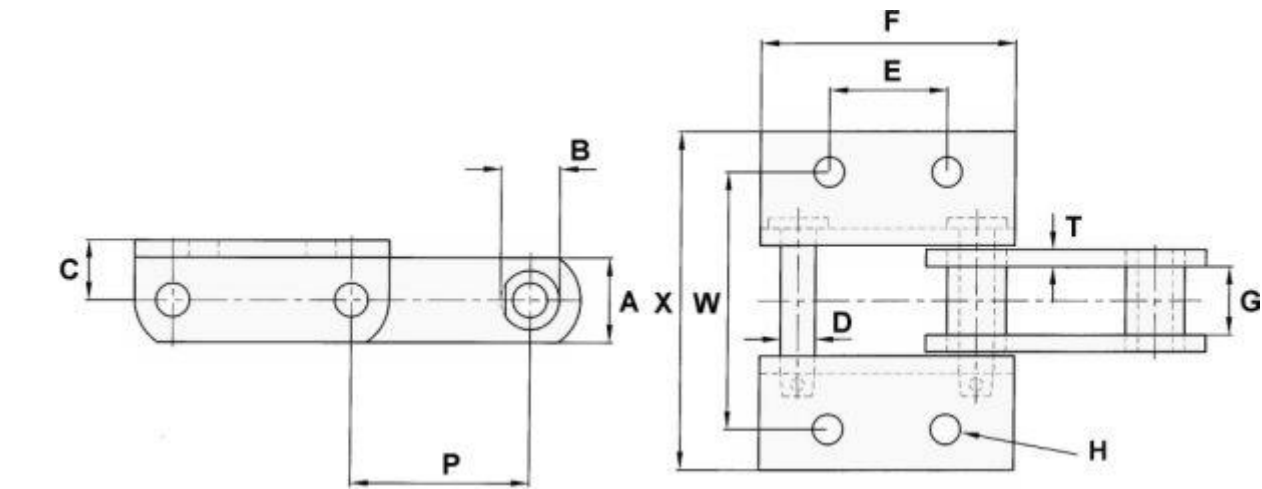
# Elevator and Drag Chains

## K2 Attachments



CHAIN NO.	PITCH P	ALLOW. LOAD	U.T.S.	PIN DIA. D	SIDEBAR DEPTH A	MAX. GEARING G	BUSH DIA. B	C	E	F	BOLT DIA. H	T	W	X
C69A	12.000	21,000	300,000	1.38	4.00	2.75	2.75	3.00	4.21	6.00	18MM	0.63	8.25	11.22
C84	9.000	17,500	250,000	1.25	3.25	2.87	2.50	3.00	3.00	4.50	16MM	0.56	8.25	11.09

## K2 Attachments

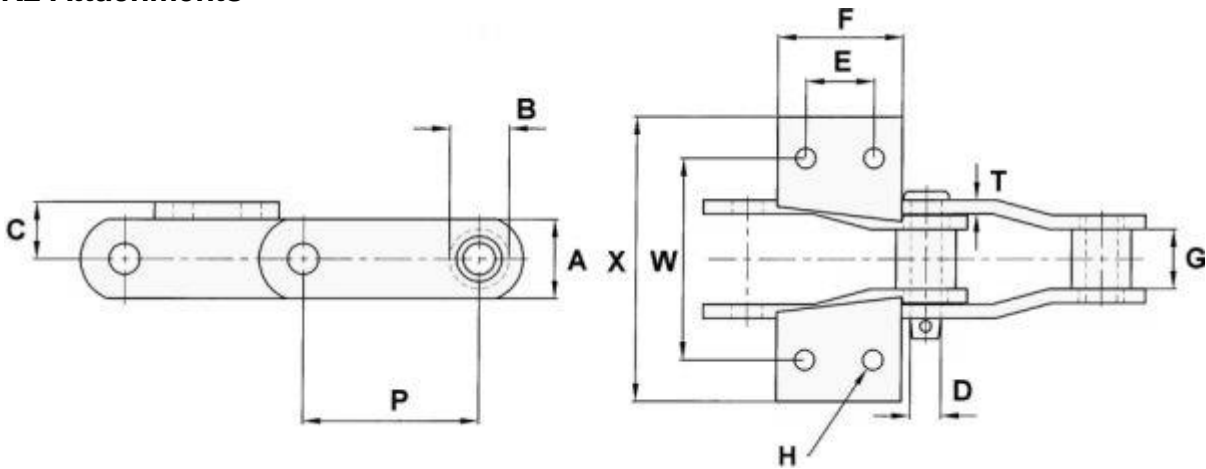


CHAIN NO.	PITCH P	ALLOW. LOAD	U.T.S.	PIN DIA. D	SIDEBAR DEPTH A	MAX. GEARING G	BUSH DIA. B	C	E	F	BOLT DIA. H	T	W	X
B5288	6.054	17,000	75,000	1.00	3.25	3.50	1.75	1.88	3.50	9.05	0.75	0.56	10.00	12.60



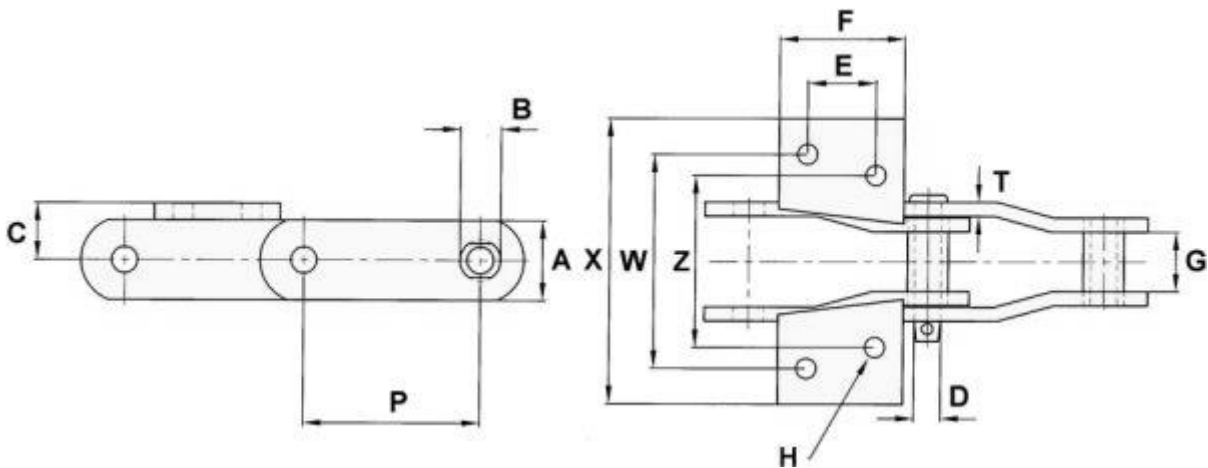
# Elevator and Drag Chains

## K2 Attachments



CHAIN NO.	PITCH P	ALLOW. LOAD	U.T.S.	PIN DIA. D	SIDEBAR DEPTH A	MAX. GEARING G	BUSH DIA. B	C	E	F	BOLT DIA. H	T	W	X
SS100B	3.937	4,100	35,000	0.56	1.75	1.44	1.18	1.00	1.00	2.13	0.38	0.31	4.00	5.56
SS100D	3.937	4,600	45,000	0.69	1.75	1.31	1.31	1.25	1.50	2.75	0.38	0.31	4.44	6.26

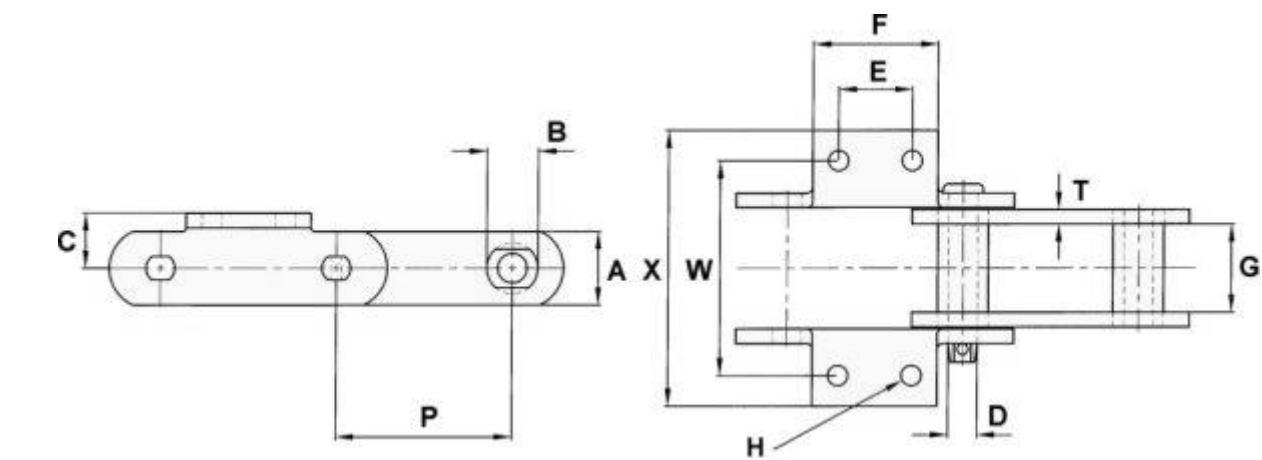
## K2 Attachments



CHAIN NO.	PITCH P	ALLOW. LOAD	U.T.S.	PIN DIA. D	SIDEBAR DEPTH A	MAX. GEARING G	BUSH DIA. B	C	E	F	BOLT DIA. H	T	W	X	Z
B5274	6.040	9,000	45,000	0.87	2.00	1.94	1.38	1.50	2.75	4.50	0.56	0.50	6.13	7.38	4.87

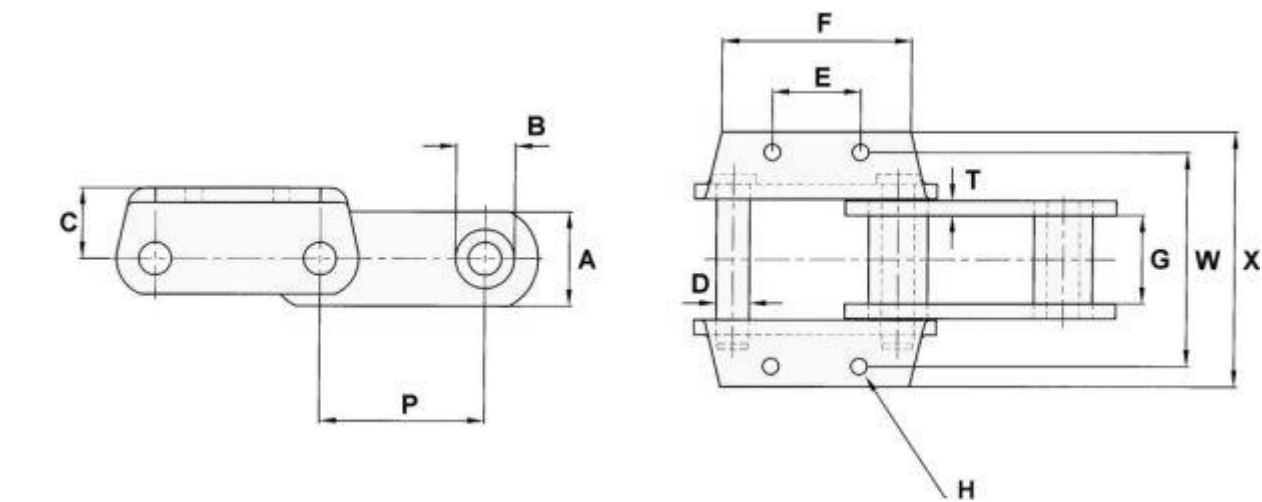
# Elevator and Drag Chains

## K2 Attachments



CHAIN NO.	PITCH	ALLOW. LOAD	U.T.S.	PIN DIA.	SIDEBAR DEPTH	MAX. GEARING	BUSH DIA.				BOLT DIA.				
	P			D	A	G	B	C	E	F	H	T	W	X	
S856	6.000	14,000	100,000	1.00	2.50	3.00	1.75	1.87	2.50	4.25	0.62	0.50	7.25	9.50	

## K24 attachments

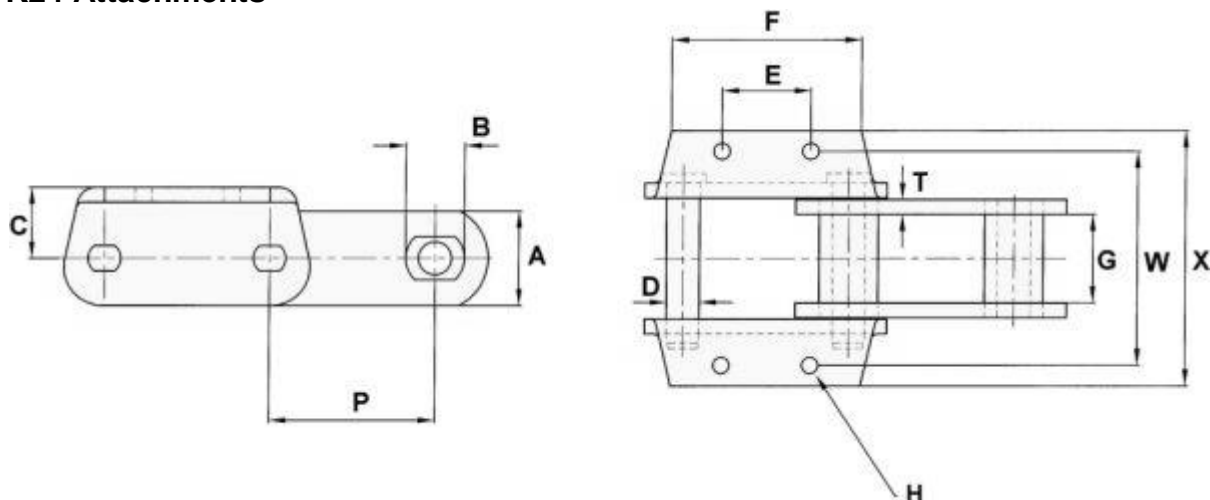


CHAIN NO.	PITCH	ALLOW. LOAD	U.T.S.	PIN DIA.	SIDEBAR DEPTH	MAX. GEARING	BUSH DIA.				BOLT DIA.				
	P			D	A	G	B	C	E	F	H	T	W	X	
S857	6.000	14,000	100,000	1.00	3.25	3.00	1.75	2.50	2.75	6.87	0.62	0.50	7.75	9.25	

Attachments cannot be fitted continuously

# Elevator and Drag Chains

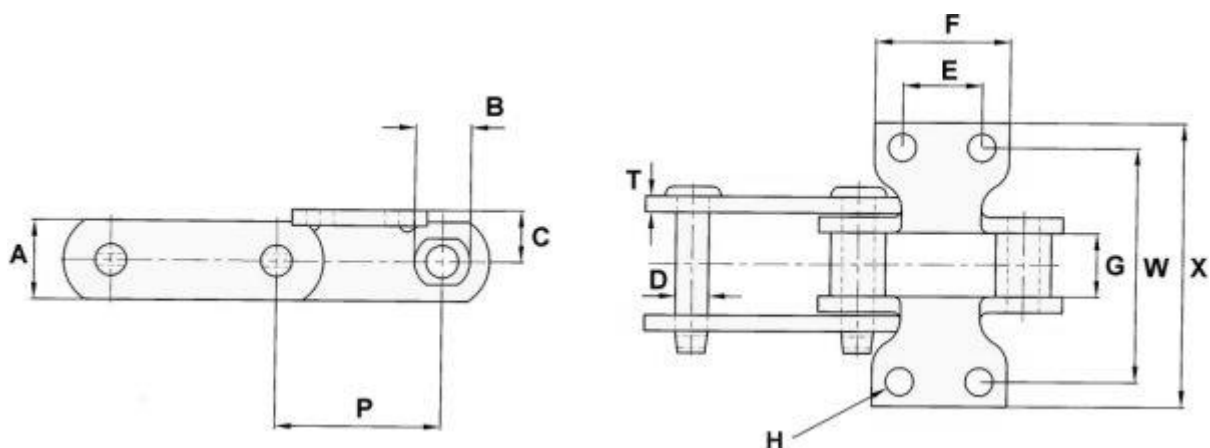
## K24 Attachments



CHAIN NO.	PITCH P	ALLOW. LOAD	U.T.S.	PIN DIA. D	SIDEBAR DEPTH A	MAX. GEARING G	BUSH DIA. B	C	E	F	BOLT DIA. H	T	W	X
S856	6.000	14,000	100,000	1.00	2.50	3.00	1.75	1.87	2.50	6.87	0.50	0.50	7.25	9.50

Attachments cannot be fitted continuously

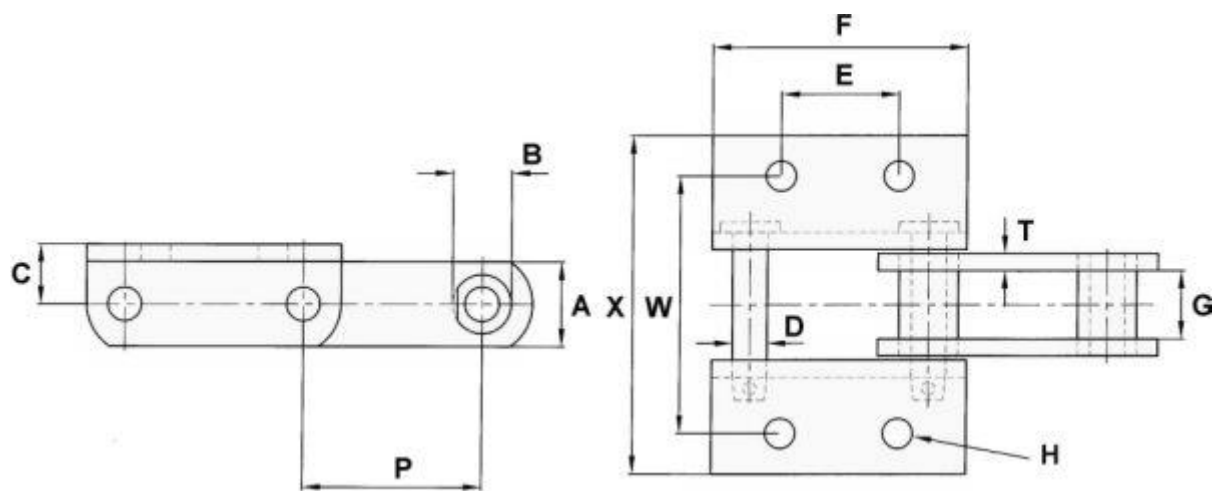
## K2 Attachments



CHAIN NO.	PITCH P	ALLOW. LOAD	U.T.S.	PIN DIA. D	SIDEBAR DEPTH A	MAX. GEARING G	BARREL DIA. B	C	E	F	BOLT DIA. H	T	W	X
SS188	2.609	2,800	25,000	0.50	1.25	1.06	0.88	0.81	1.25	2.13	0.38	0.25	3.75	4.53

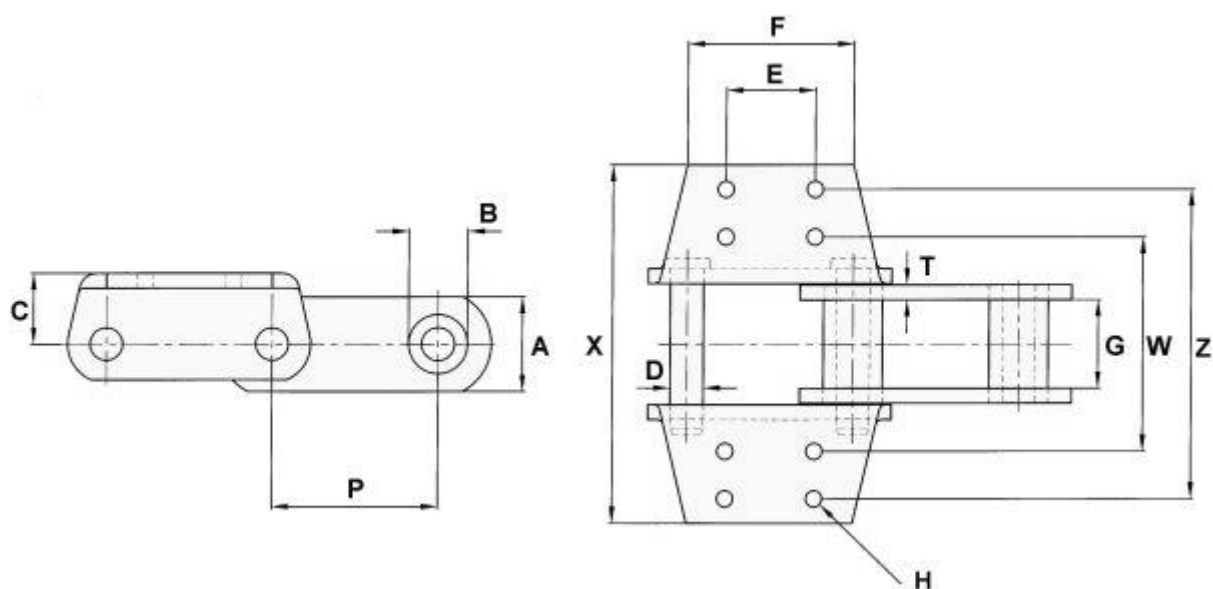
# Elevator and Drag Chains

## K2 Attachments



CHAIN NO.	PITCH	ALLOW. LOAD	U.T.S.	PIN DIA.	SIDEBAR DEPTH	MAX GEARING	BARREL DIA.				BOLT DIA.			
	P			D	A	G	B	C	E	F	H	T	W	X
SS102B	4.000	6,300	40,000	0.62	1.50	2.13	1.00	1.00	1.75	5.75	0.38	0.38	5.31	6.66

## K44 attachments

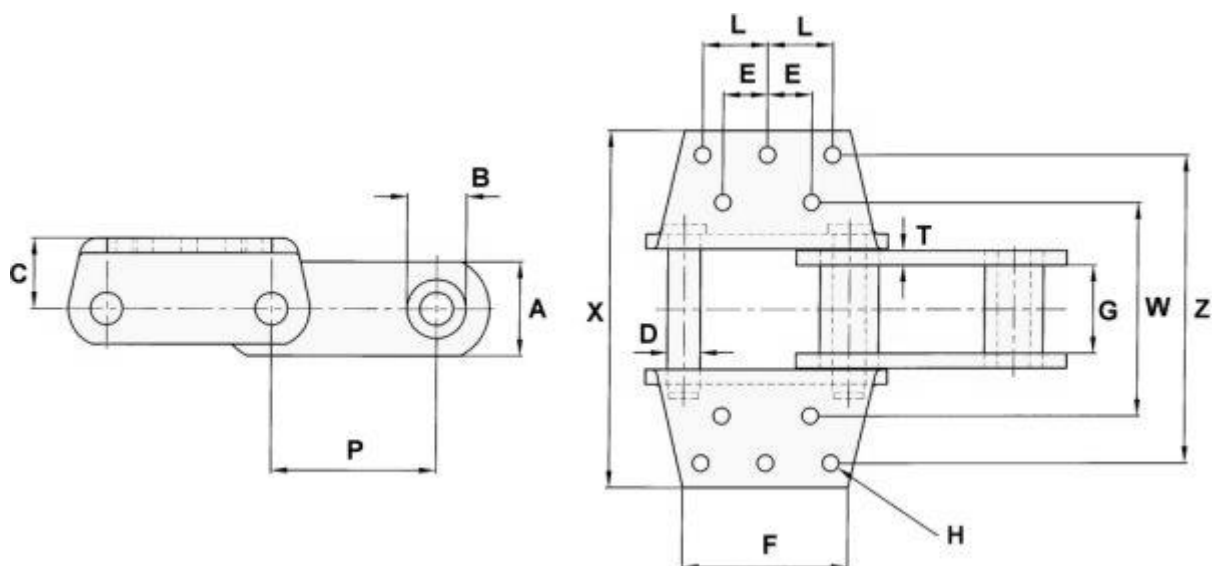


CHAIN NO.	PITCH	ALLOW. LOAD	U.T.S.	PIN DIA.	SIDEBAR DEPTH	MAX GEARING	BARREL DIA.				BOLT DIA.				
	P			D	A	G	B	C	E	F	H	T	W	X	Z
S857	6.000	14,000	100,000	1.00	3.25	3.00	1.75	2.50	3.50	5.94	0.50	0.50	7.00	14.00	12.00

Attachments cannot be fitted continuously

# Elevator and Drag Chains

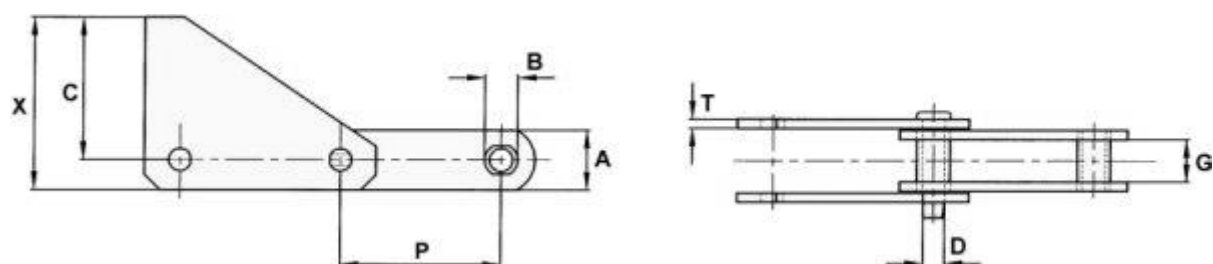
## K443 attachments



CHAIN NO.	PITCH P	ALLOW. LOAD	U.T.S.	PIN DIA. D	SIDEBAR DEPTH A	MAX. GEARING G	BARREL DIA. B	C	E	F	BOLT DIA. H	L	T	W	X	Z
S864	7.000	22,000	155,000	1.25	4.00	3.75	2.38	3.00	1.87	7.00	0.62	2.75	0.62	9.00	15.00	13.00
S984	7.000	24,000	325,000	1.38	4.00	3.75	2.50	3.00	1.87	7.00	0.62	2.75	0.62	9.00	15.00	13.00

Attachments cannot be fitted continuously

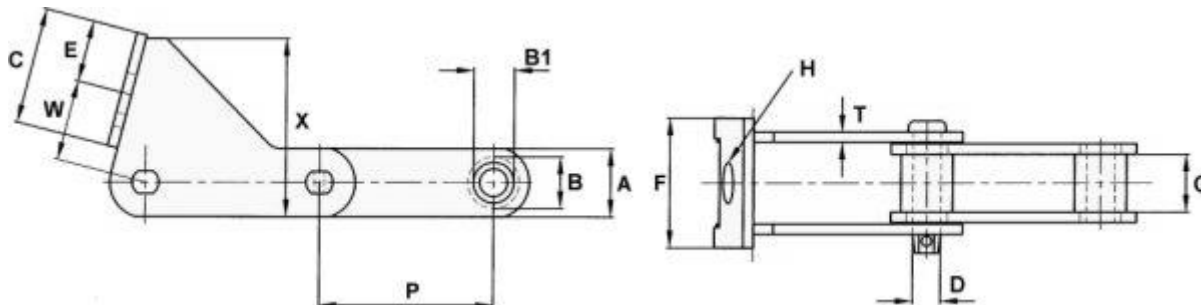
## S1 attachments



CHAIN NO.	PITCH P	ALLOW. LOAD	U.T.S.	PIN DIA. D	SIDEBAR DEPTH A	MAX. GEARING G	BUSH DIA. B	C	T	X
S82	3.075	4,300	35,000	0.62	1.50	1.37	1.19	5.19	0.25	5.94
SS102B	4.000	6,300	40,000	0.62	1.50	2.13	1.00	3.75	0.38	4.50
SS110	6.000	6,300	40,000	0.62	1.50	2.13	1.25	4.25	0.38	5.50
B5298	6.000	6,550	90,000	0.75	2.38	1.55	1.38	5.00	0.38	6.19
B5143	135MM	5,575	55,000	0.75	2.00	1.50	1.10	4.88	0.31	5.88

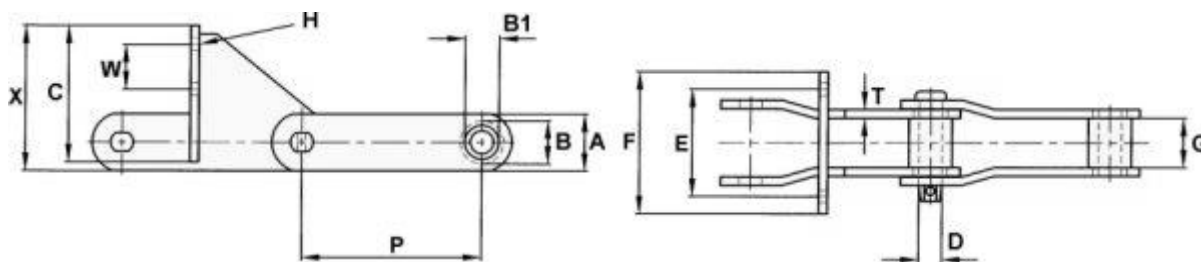
# Elevator and Drag Chains

## Pusher attachments – Angle Face



CHAIN NO.	PITCH P	ALLOW. LOAD	U.T.S.	PIN DIA. D	SIDEBAR DEPTH A	MAX. GEARING G	BUSH DIA. B	BUSH SHOULDER B1	C	E	F	H	T	W	X
E160	160MM	10,300	100,000	1.00	2.25	2.20	48MM	1.50	4.25	2.25	4.75	1.50	0.38	2.93	6.50
EC160A	160MM	10,300	100,000	1.00	2.25	2.20	48MM	1.50	4.25	2.25	4.75	1.50	0.38	2.93	6.50
506	6.050	10,330	170,000	1.00	2.75	1.94	48MM	1.50	3.75	1.75	3.75	36MM	0.50	3.00	6.00

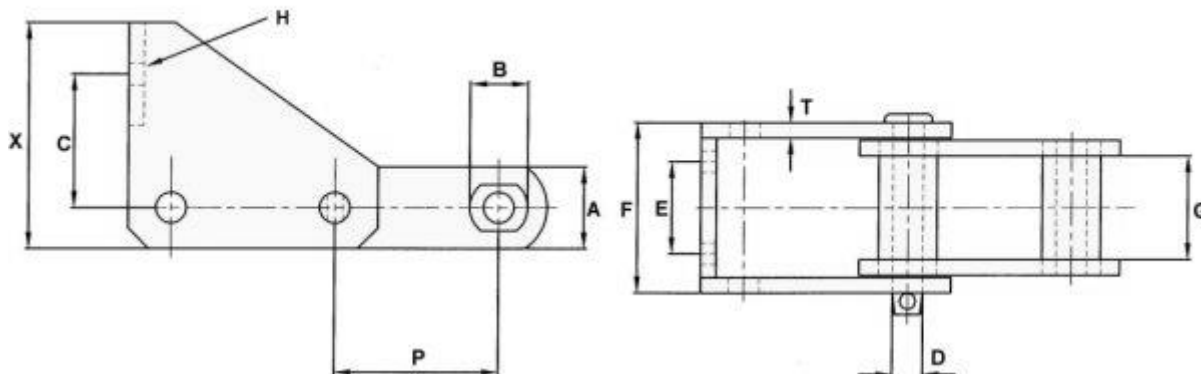
## Pusher attachments – Square Face



CHAIN NO.	PITCH P	ALLOW. LOAD	U.T.S.	PIN DIA. D	SIDEBAR DEPTH A	MAX. GEARING G	BUSH DIA. B	BUSH SHOULDER B1	C	E	F	H	T	W	X
EC160A	160MM	10,300	100,000	1.00	2.50	2.20	48MM	1.50	3.50	108MM	140MM	12MM	0.38	50MM	6.33
EC160A	160MM	10,300	100,000	1.00	2.50	2.20	48MM	1.50	3.50	120MM	160MM	12MM	0.38	50MM	6.33
EC200	200MM	10,300	100,000	1.00	2.50	2.20	48MM	1.50	6.00	120MM	6.25	12MM	0.38	50MM	6.38

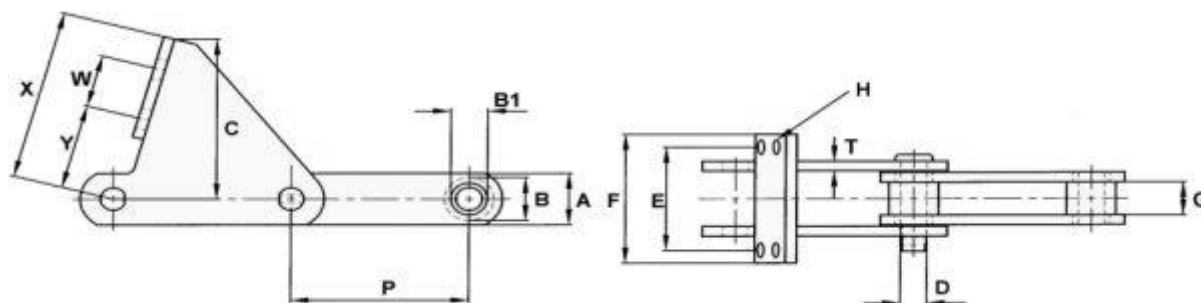
# Elevator and Drag Chains

## Pusher Attachments- Square Face



CHAIN NO.	PITCH P	ALLOW. LOAD	U.T.S.	PIN DIA. D	SIDEBAR DEPTH A	MAX. GEARING G	BUSH DIA. B		C	E	F	BOLT DIA. H	T	X
B5099	4.000	9,500	75,000	0.75	2.00	2.62	1.44		3.25	2.25	4.16	0.50	0.38	5.50

## Pusher attachments – Special



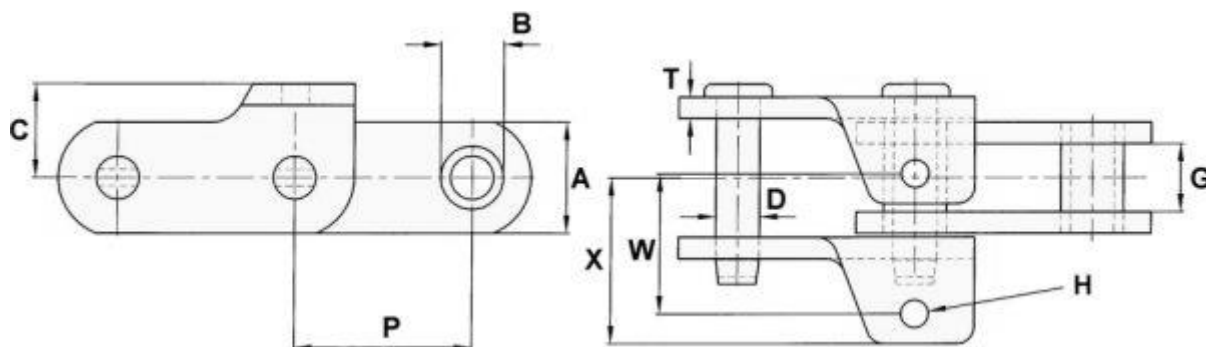
CHAIN NO.	PITCH P	ALLOW. LOAD	U.T.S.	PIN DIA. D	SIDEBAR DEPTH A	MAX. GEARING G	BUSH DIA. B	BUSH SHOULDER B1	C	E	F	BOLT DIA. H	T	W	X	Y
1796*	6.000	7,500	100,000	0.87	2.25	1.50	1.75	1.25	3.88	120MM	160MM	12MM	0.38	50MM	5.06	2.11
D2184	6.000	7,100	80,000	0.87	2.00	1.38	1.25	-	6.28	4.00	5.00	0.50	0.38	2.00	6.50	3.25

\* Pusher faces are vertical



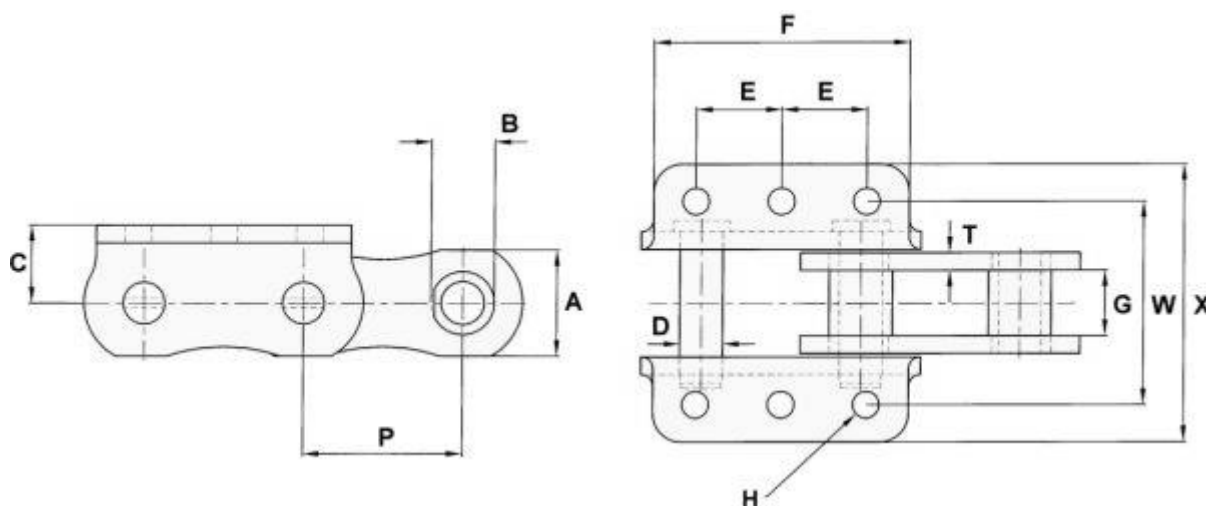
# Elevator and Drag Chains

## Tower chains



CHAIN NO.	PITCH P	ALLOW. LOAD	U.T.S.	PIN DIA. D	SIDEBAR DEPTH A	MAX. GEARING G	BUSH DIA. B	C	BOLT DIA. H	T	W	X
B5023	2.609	3,700	60,000	0.63	1.63	1.00	0.94	1.38	0.38	0.31	1.88	2.44

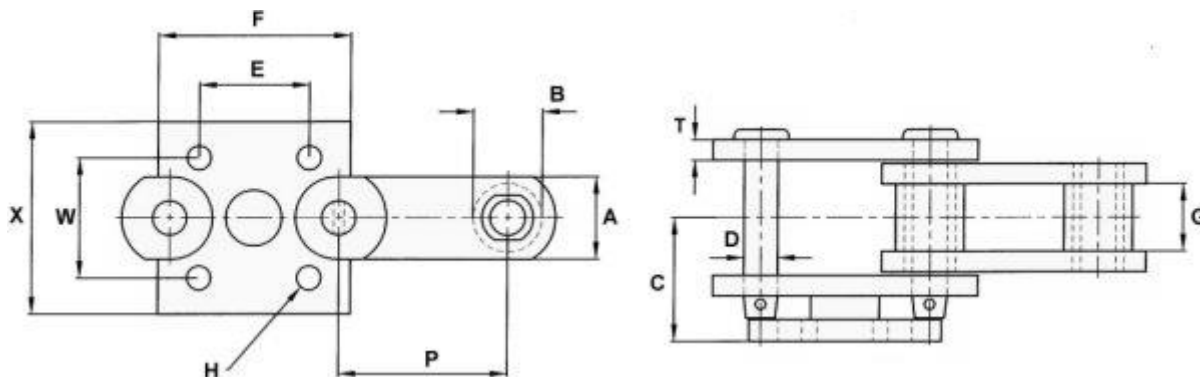
## Cutter chains



CHAIN NO.	PITCH P	ALLOW. LOAD	U.T.S.	PIN DIA. D	SIDEBAR DEPTH A	MAX. GEARING G	BUSH DIA. B	C	E	F	BOLT DIA. H	T	W	X
B2024	2.800	4,700	60,000	0.75	1.88	1.16	1.13	1.38	1.50	4.50	0.44	0.31	3.50	4.88

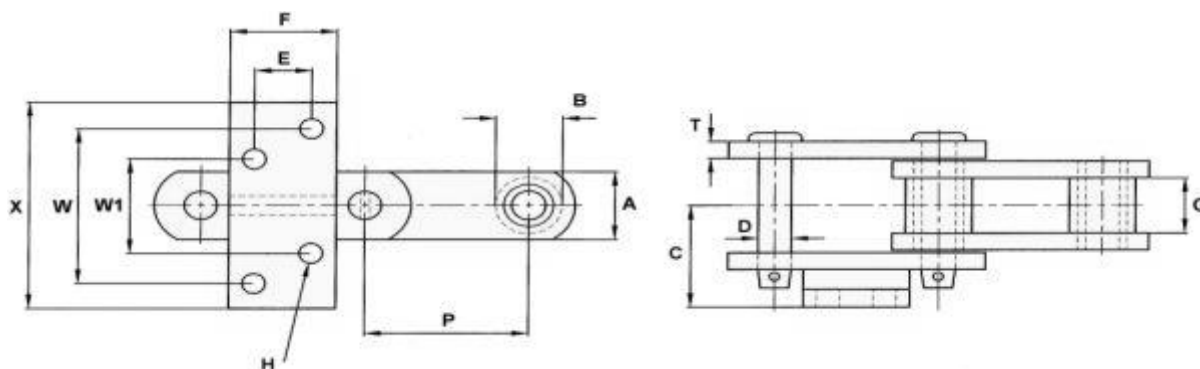
# Elevator and Drag Chains

## G4 Attachment



CHAIN NO.	PITCH P	ALLOW. LOAD	U.T.S.	PIN DIA. D	SIDEBAR DEPTH A	MAX. GEARING G	BUSH DIA. B	C	E	F	BOLT DIA. H	W	X
SS131	3.075	4,500	40,000	0.62	1.50	1.31	1.25	2.25	2.00	3.50	0.38	2.19	3.50

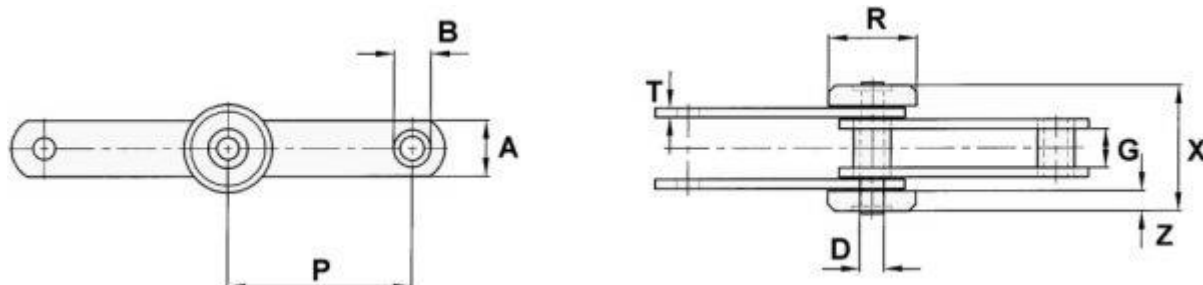
## G4 Attachments – Offset Holes



CHAIN NO.	PITCH P	ALLOW. LOAD	U.T.S.	PIN DIA. D	SIDEBAR DEPTH A	MAX. GEARING G	BUSH DIA. B	C	E	F	BOLT DIA. H	W	W1	X
SS103	3.075	4,100	25,000	0.62	1.50	1.90	1.22	2.06	0.63	2.00	0.38	3.00	1.75	4.00

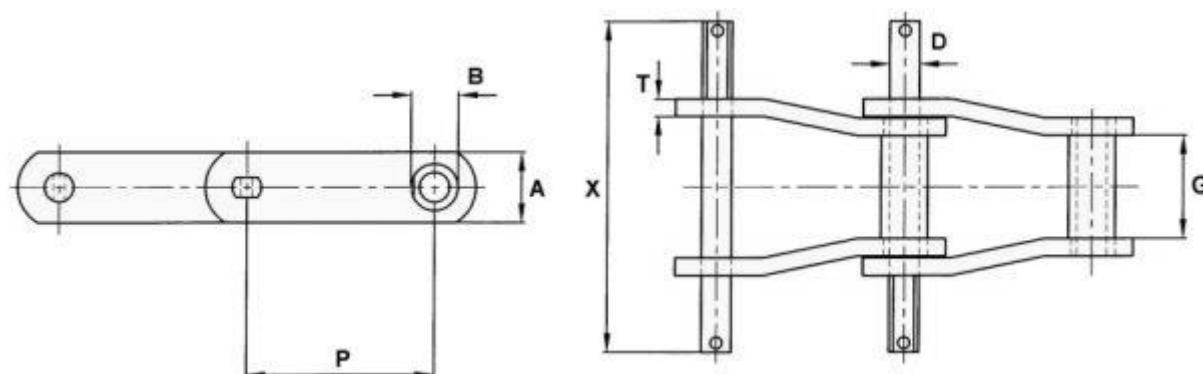
# Elevator and Drag Chains

## Outboard roller



CHAIN NO.	PITCH P	ALLOW. LOAD	U.T.S.	PIN DIA. D	SIDEBAR DEPTH A	MAX. GEARING G	BUSH DIA. B	R	X	Z
B125	125MM	3,600	24,000	0.62	1.50	1.03	1.00	60MM	3.19	0.54

## Extended pin



CHAIN NO.	PITCH P	ALLOW. LOAD	U.T.S.	PIN DIA. D	SIDEBAR DEPTH A	MAX. GEARING G	BUSH DIA. B	T	X
B5063	4.000	6,300	50,000	0.62	1.50	2.13	1.00	0.38	7.06
B5109	4.000	6,400	67,000	0.62	1.50	2.19	1.00	0.38	7.03