

Bakery Chains



Altec UK Ltd
The Mohawk Building,
Gorse Street
Blackburn
BB1 3EU
T. 0800 756 9669 F. 0800 756 9669



Altec UK Ltd, The Mohawk Building, Gorse Street, Blackburn. BB1 3EU

T. 0800 756 9669

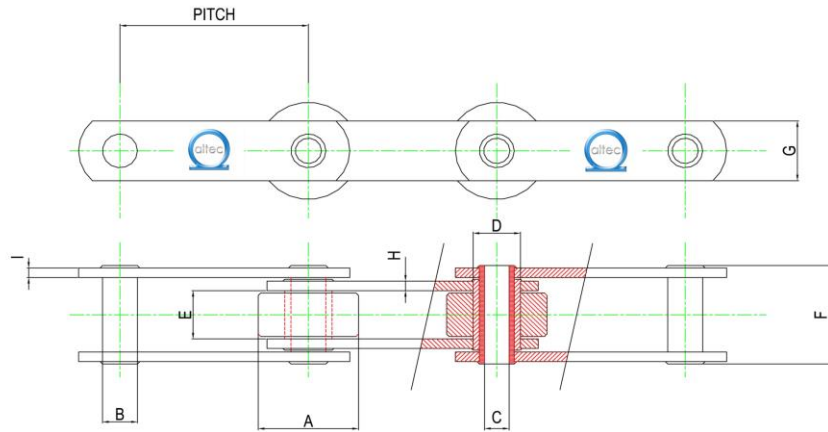
F. 0800 756 9669

Sales@altec.uk.com

Proving Chains (Hollow Bearing Pin)

Key Features – Proving Chains

- Manufactured to BS 4116 Part 4.
- Specially designed press tooling ensures high pitch accuracy for matching twin strand chains.
- Pre coated in high specification bakery grade lubricants.



24,000lb and 36,000lb Proving Chain Series

Part No	Pitch		Roller diameter	Pin diameter	Pin Bore Min	Bush Diameter	Inside Width	Pin Length	Link Height	Link Thickness Inner	Link Thickness Outer	Link Offset	Breaking Load lbs	Chain Weight kg/m
	Inches	mm	A	B	C	D	E	F	G	H	I	J	K	L
102412/16/P	6.0	152.4	66.68	26.97	20.1	33.2	25.4	57.1	50.0	7.0	5.0	30.1	24000	10.1
102412/26/P	6.0	152.4	76.2	-	-	-	-	-	-	-	-	-	-	11.5
102414/16/P	7.0	177.8	66.68	-	-	-	-	-	-	-	-	-	-	9.36
102416/16/P	8.0	203.2	66.68	-	-	-	-	-	-	-	-	-	-	8.82
102416/26/P	8.0	203.2	76.2	-	-	-	-	-	-	-	-	-	-	9.9
103610/16/P	5.0	127	88.9	31.8	23.1	41.2	38.1	82	65.0	10.0	8.0	34.9	36000	23.8
103612/16/P	6.0	152.4	88.9	-	-	-	-	-	-	-	-	-	-	21.2
103616/16/P	8.0	203.2	88.9	-	-	-	-	-	-	-	-	-	-	17.9
103616/16/P	8.0	203.2	127	-	-	-	-	-	-	-	-	-	-	27.3

Call Free on 0800 756 9669



Altec UK Ltd, The Mohawk Building, Gorse Street, Blackburn. BB1 3EU

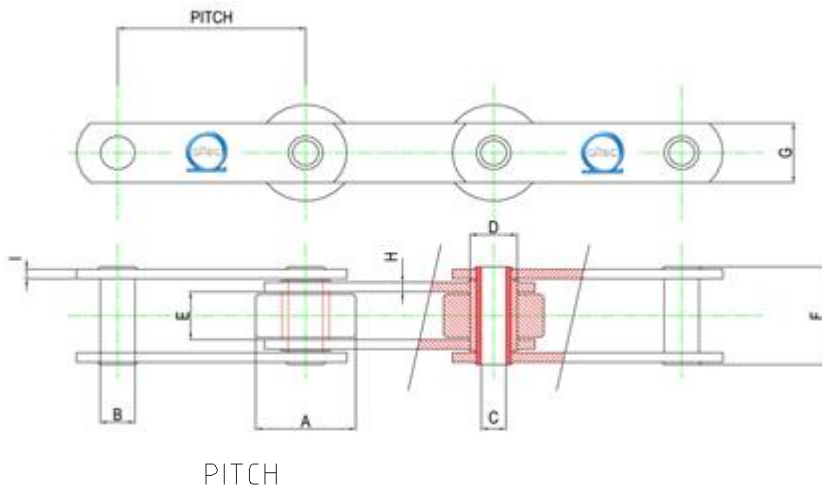
T. 0800 756 9669 F. 0800 756 9669

Sales@altec.uk.com

Oven Chains (Hollow Bearing Pin)

Key Features – Oven Chains

- Improved fatigue life is obtained by ensuring precise fits between the pin, bush and roller
- High accuracy components ensure the chain pitch and fits are maintained at elevated temperatures
- Pre coated in high temperature food grade lubricant for operation at up to 650°C



Hollow Bearing pin Oven Chain Series

Part No	Pitch		Roller diameter	Pin diameter	Pin Bore Min	Bush Diameter	Inside Width	Pin Length	Link Height	Link Thickness Inner	Link Thickness Outer	Link Offset	Breaking Load lbs	Chain Weight kg/m
	Inches	mm	A	B	C	D	E	F	G	H	I	J	K	L
102412/16/O	6.0	152.4	66.68	26.97	20.1	33.2	25.4	57.1	50.0	7.0	5.0	30.1	24000	10.1
102412/26/O	6.0	152.4	76.2	-	-	-	-	-	-	-	-	-	-	11.5
102414/16/O	7.0	177.8	66.68	-	-	-	-	-	-	-	-	-	-	9.36
102416/16/O	8.0	203.2	66.68	-	-	-	-	-	-	-	-	-	-	8.82
102416/26/O	8.0	203.2	76.2	-	-	-	-	-	-	-	-	-	-	9.9
103610/16/O	5.0	127	88.9	31.8	23.1	41.2	38.1	82	65.0	10.0	8.0	34.9	36000	23.8
103612/16/O	6.0	152.4	88.9	-	-	-	-	-	-	-	-	-	-	21.2
103616/16/O	8.0	203.2	88.9	-	-	-	-	-	-	-	-	-	-	17.9
103616/16/O	8.0	203.2	127	-	-	-	-	-	-	-	-	-	-	27.3

Call Free on 0800 756 9669



Altec UK Ltd, The Mohawk Building, Gorse Street, Blackburn. BB1 3EU

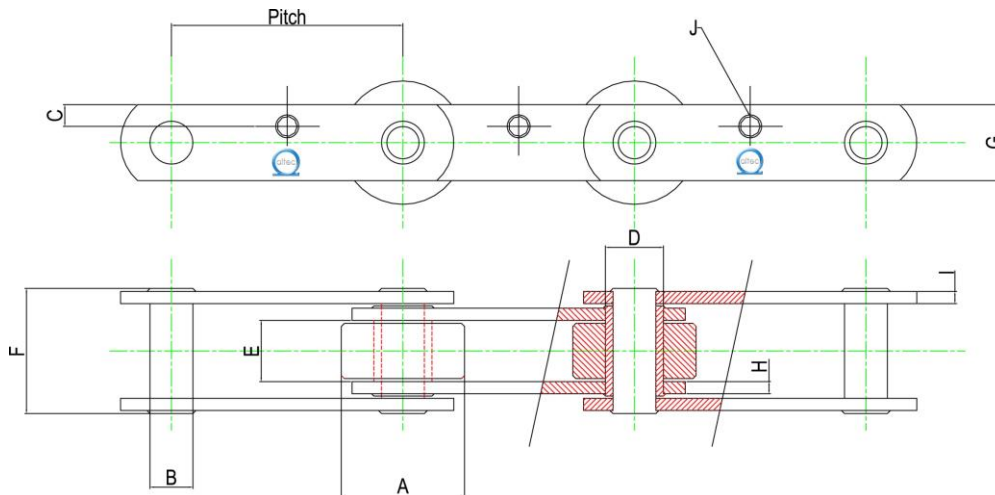
T. 0800 756 9669 F. 0800 756 9669

Sales@altec.uk.com

Oven Chains (Solid Pin)

General Features

- Maximum bush and roller life is obtained by ensuring concentricity and heat treatment processes are tightly controlled
- Specially designed punch press tooling ensures pitch accuracy within 0.0005"
- Pre coated in high specification Bakery accredited lubricants



Solid Bearing Pin Oven Chain Series

Part No	Pitch		Roller diameter	Pin diameter	offset on link	Bush Diameter	Inside Width	Pin Length	Link Height	Link Thickness Inner	Link Thickness Outer	Hole dia and angle	Breaking Load lbs	Chain Weight kg/m
	Inches	mm	A	B	C	D	E	F	G	H	I	J	K	L
106018/16/60	9.0	228.6	120.7	25.4	14.3	57.2	65	108	70.0	8.0	8.0	13.1/60°	60000	26.7
106018/16/90	9.0	228.6	120.7	25.4	14.3	57.2	65	108	70.0	8.0	8.0	14.12/90°	60000	26.7

Call Free on 0800 756 9669

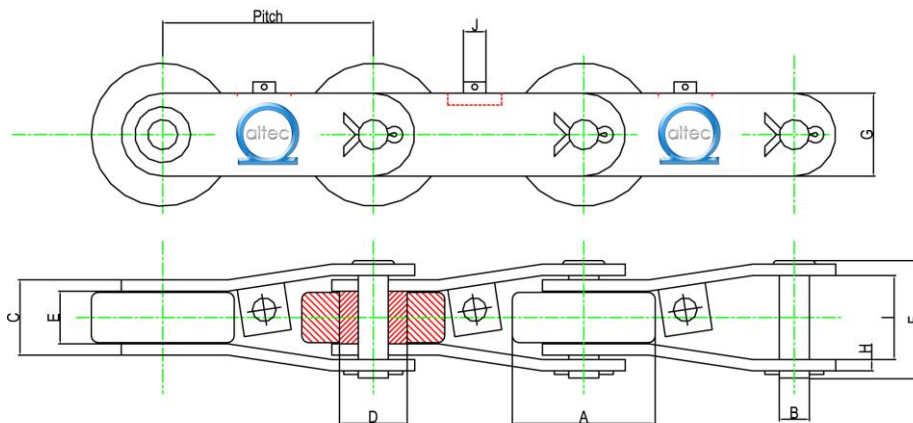


Cranked Link Chains

General Features

Altec ensure the optimum performance by controlling

- Materials & Heat treatment processes
- Production processes
- Fits & Limits
- Attachment assembly & welding
- Lubrication and coatings



Cranked Link Chain Series

Part No	Pitch		Roller diameter		Pin diameter		over inner links	Bush Diameter	Inside Width	Pin Length	Link Height	Link Thickness	Between outer links	Stud diameter	Breaking Load lbs	Chain Weight kg/m
	Inches	mm	A	B	C	D	E	F	G	H	I	J	K	L		
282371/01/LH	7.0	177.8	120.7	25.4	63.5	57.2	44.5	119	70.0	10.0	90.0	19.1	85000	25.2		
282360/01/RH	7.0	177.8	120.7	25.4	63.5	57.2	44.5	119	70.0	10.0	90.0	19.1	85000	25.2		
282169/01/LH	9.0	228.6	120.7	25.4	63.5	57.2	44.5	119	70.0	10.0	90.0	19.1	85000	19.6		
282168/01/RH	9.0	228.6	120.7	25.4	63.5	57.2	44.5	119	70.0	10.0	90.0	19.1	85000	19.6		

Call Free on 0800 756 9669

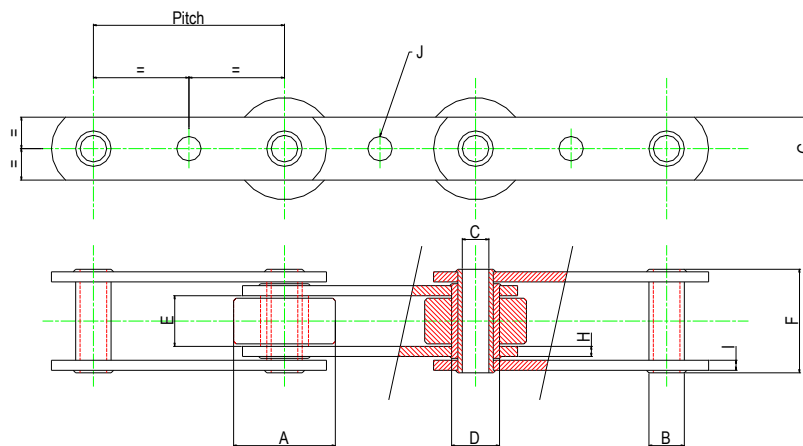


Altec UK Ltd, The Mohawk Building, Gorse Street, Blackburn. BB1 3EU
 T. 0800 756 9669 F. 0800 756 9669
 Sales@altec.uk.com

Centre Hole Carrier Chains

General Features

- Hole accuracy ensure smooth mating of chains in existing applications
- Specially formulated lubricants enhance the life of the chain
- All chains are resistant to high shock loads due to quality control during the manufacturing process



Centre Hole Carrier Chain

Part No	Pitch		Roller diameter	Pin diameter	Pin Bore Min	Bush Diameter	Inside Width	Pin Length	Link Height	Link Thickness Inner	Link Thickness Outer	Hole Dia	Breaking Load lbs	Chain Weight kg/m
	Inches	mm	A	B	C	D	E	F	G	H	I	J	K	L
288312/01	6.0	152.4	66.68	26.97	20.1	33.2	25.4	57.1	50.0	7.0	5.0	19.43	24000	10.1
288208/01	6.0	152.4	66.68	29.67	20.1	33.2	25.4	57.1	50.0	7.0	5.0	9.91*	24000	10.1

Call Free on 0800 756 9669

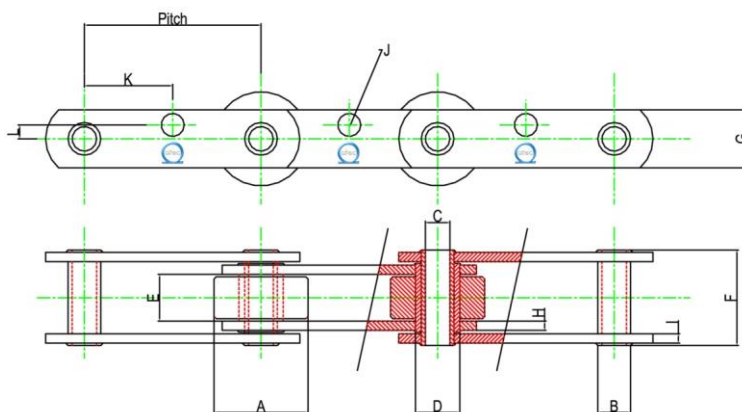


Altec UK Ltd, The Mohawk Building, Gorse Street, Blackburn. BB1 3EU
 T. 0800 756 9669 F. 0800 756 9669
 Sales@altec.uk.com

Punched Link Chains

Key Features

- Manufactured to BS 4116 Part 4 under our ISO 9001:2000 Quality Accreditation
- Specially designed punch press tooling ensures pitch accuracy within 0.0005"
- Pre coated in high specification Bakery accredited lubricants



Punched Link Chain Series

Part No	Pitch		Roller diameter	Pin diameter	Pin Bore Min	Bush Diameter	Inside Width	Pin Length	Link Height	Link Thickness Inner	Link Thickness Outer	Link Offset	Breaking Load lbs	Chain Weight kg/m
	Inches	mm	A	B	C	D	E	F	G	H	I	J	K	L
102412/16/P	6.0	152.4	66.68	26.97	20.1	33.2	25.4	57.1	50.0	7.0	5.0	30.1	24000	10.1
102412/26/P	6.0	152.4	76.2	-	-	-	-	-	-	-	-	-	-	11.5
102414/16/P	7.0	177.8	66.68	-	-	-	-	-	-	-	-	-	-	9.36
102416/16/P	8.0	203.2	66.68	-	-	-	-	-	-	-	-	-	-	8.82
102416/26/P	8.0	203.2	76.2	-	-	-	-	-	-	-	-	-	-	9.9
103610/16/P	5.0	127	88.9	31.8	23.1	41.2	38.1	82	65.0	10.0	8.0	34.9	36000	23.8
103612/16/P	6.0	152.4	88.9	-	-	-	-	-	-	-	-	-	-	21.2
103616/16/P	8.0	203.2	88.9	-	-	-	-	-	-	-	-	-	-	17.9
103616/16/P	8.0	203.2	127	-	-	-	-	-	-	-	-	-	-	27.3

Call Free on 0800 756 9669

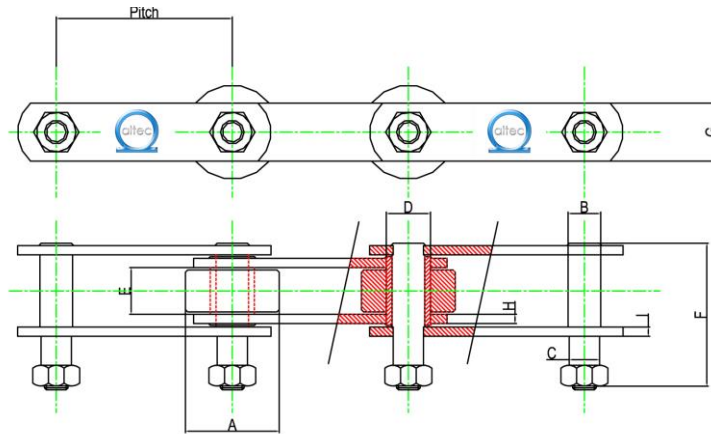


Altec UK Ltd, The Mohawk Building, Gorse Street, Blackburn. BB1 3EU
 T. 0800 756 9669 F. 0800 756 9669
 Sales@altec.uk.com

Cooler Chains (Solid Extended Pin)

Key Features

- Manufactured to BS 4116 Part 4 under our ISO 9001:2000 Quality Accreditation
- Specially designed punch press tooling ensures pitch accuracy within 0.0005"
- Pre coated in high specification Bakery accredited lubricants



Cooler chain Series

Part No	Pitch		Roller diameter	Pin diameter	Ext Pin Dia	Bush Diameter	Inside Width	Pin Length	Link Height	Link Thickness Inner	Link Thickness Outer	Link Offset	Breaking Load lbs	Chain Weight kg/m
	Inches	mm	A	B	C	D	E	F	G	H	I			
102412/16/P	6.0	152.4	66.68	26.97	20.1	33.2	25.4	57.1	50.0	7.0	5.0	30.1	24000	10.1
102412/26/P	6.0	152.4	76.2	-	-	-	-	-	-	-	-	-	-	11.5
102414/16/P	7.0	177.8	66.68	-	-	-	-	-	-	-	-	-	-	9.36
102416/16/P	8.0	203.2	66.68	-	-	-	-	-	-	-	-	-	-	8.82
102416/26/P	8.0	203.2	76.2	-	-	-	-	-	-	-	-	-	-	9.9
103610/16/P	5.0	127	88.9	31.8	23.1	41.2	38.1	82	65.0	10.0	8.0	34.9	36000	23.8
103612/16/P	6.0	152.4	88.9	-	-	-	-	-	-	-	-	-	-	21.2
103616/16/P	8.0	203.2	88.9	-	-	-	-	-	-	-	-	-	-	17.9
103616/16/P	8.0	203.2	127	-	-	-	-	-	-	-	-	-	-	27.3

Call Free on 0800 756 9669



Altec UK Ltd, The Mohawk Building, Gorse Street, Blackburn. BB1 3EU
T. 0800 756 9669 F. 0800 756 9669
Sales@altec.uk.com

Transmission Chains

Altec offer a complete range of transmission chain and attachments

- British Standard Chains to ISO 606 – Simplex, Duplex and Triplex
- British Standard Double Pitch Chains to ISO 1275
- Complete range of attachments, extended pins and pushers.
- Special or adapted chains manufactured in house.
- Corner Bend Chains
- Pre-lubricated to suit the application
- Nickel plated, zinc coated or stainless steel
- Maintenance Free Chains

Sprockets

Altec offer a complete range of Sprockets.

- Fabricated Steel
- Cast Iron or Steel
- Simple, Duplex, Triplex and Multiplex Sprockets
- Modular Belt
- Harden Steel
- Rack tooth Profiled
- Machined tooth

Transmission Chains



Conveyor Chains



Sprockets and Gears



Special Chain Designs



Altec UK Ltd, The Mohawk Building, Gorse Street, Blackburn. BB1 3EU

T. 0800 756 9669 F. 0800 756 9669

Sales@altec.uk.com